

EcotBeams™

SAVING TOMORROWS FORESTS TODAY™



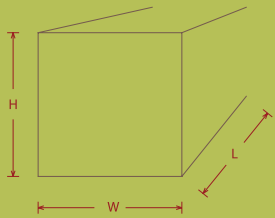
• ULTIMATE GREEN BUILDING PRODUCT

• PASSED UL 1715 & UBC 26-3 ROOM CORNER FIRE TEST

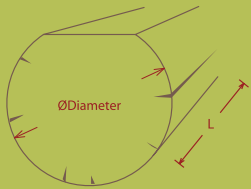


BEAM SIZES

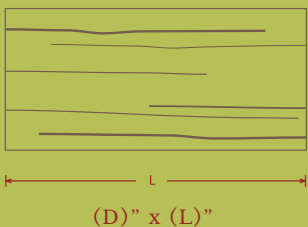
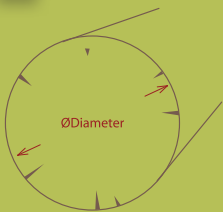
EcoBeams™ are fabricated in most **any size & length imaginable**. All beams are made to fit your project and not limited to the size of a “molded beam”. Unlike polyurethane U-shaped beams that are made from molds and identical to each other, EcoBeams™ are **hand-crafted for authenticity** - just like real wood.



VEGA BEAM



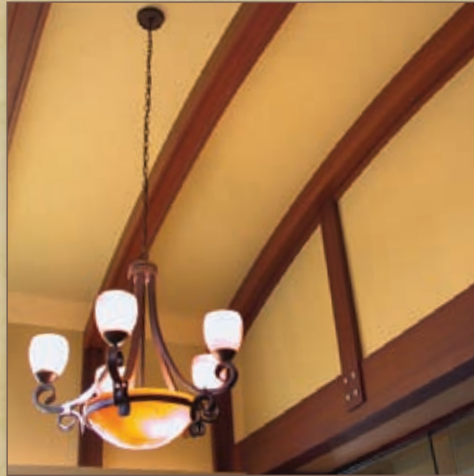
VEGA LOG



EcoBeams™

PCF EcoBEAMS™ PROVIDE A REALISTIC REPLICATION AND A LIGHTWEIGHT ALTERNATIVE TO REAL WOOD BEAMS. INSTALL OUR PRODUCT WITH EASE BY SIMPLY USING A MANUFACTURER RECOMMENDED ADHESIVE.

FOUR STYLES TO CHOOSE FROM



SMOOTH FINISH



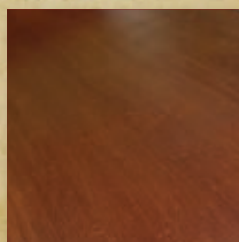
STANDARD GRAIN



RUSTIC GRAIN



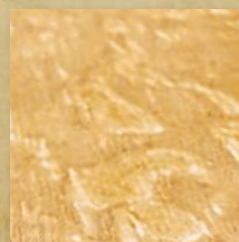
RUSTIC WITH CRACKS



SMOOTH FINISH



STANDARD GRAIN



RUSTIC GRAIN



RUSTIC WITH CRACKS

Corbels



PCF CORBELS COMPLIMENT OUR ECOBEAMS. CHOOSE FROM OUR MANY STYLES BELOW. LENGTHS CAN BE MADE TO MATCH BEAM WIDTHS.

ECOBEAMS™ BENEFITS

- Any Size Available
- Accepts Water Based Wood Stains
- No Rotting or Mildew
- Easier & Safer to Install than Real Wood
- 100% Warp Free
- Termite Resistant
- CFC & HCFC Free
- Eco-Intelligent Choice for Building Design & Innovation
- Made from minimum 30% Recycled Content
- Preserves our Precious Natural Resources
- Fabrication by-product is 100% Recycled
- EcoBeams are Recyclable - Reducing Overall Jobsite Debris
- Non-Toxic / Zero VOC Does Not Affect Indoor Air Quality
- Manufactured in the U.S. with Locally Acquired Materials
- Mold Resistant Tests favorably in Accordance with ASTM C1338
- Passed UL 1715 & UBC 26-3 Room Corner Fire Test

| | COR-1 | COR-2 | COR-3 | COR-4 |
|---|-------|-------|-------|-------|
| A | | | | |
| B | | | | |
| C | | | | |
| | COR-5 | COR-6 | COR-7 | COR-8 |
| A | | | | |
| B | | | | |
| C | | | | |

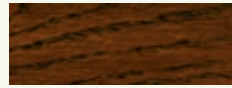
FINISHES FOR BEAMS & CORBELS*



CHERRY



COLONIAL



DARK WALNUT



DRIFTWOOD



EARLY AMERICAN



EBONY



ENGLISH CHESTNUT



FRUITWOOD



GOLDEN OAK



GOLDEN PECAN



IPSWICH PINE



JACOBEOAN



RED MAHOGANY



PICKLED OAK



PROVINCIAL



PURITAN OAK



RED OAK



SEDONA RED



SPECIAL WALNUT

*EcoBEAMS™ ARE AVAILABLE UNFINISHED UPON REQUEST.

The colors shown are for reference purposes only. They have been reproduced using digital production techniques. Our handcrafted product is made from natural minerals and synthetic materials that can vary in color and texture. This variation adds a natural appearance to the product. Changes in shape and contours of timbers may create variations over larger surfaces and over a run of several timbers. The PCF Group recommends factory finishing using Minwax® Wood Finish™ stains. Water based stains are available upon request. If selecting unfinished, always test stain on a hidden area of the EcoBeams™ to verify desired color.

HOW TO ORDER

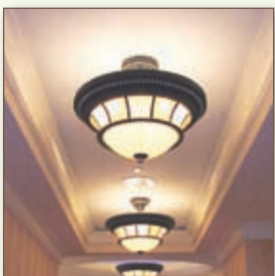
1. Measure the length of the room(s) where you want to place the EcoBeams™ (add a couple of inches for insurance & cut true in field). Note desired layout of EcoBeams™ and be certain to clear obstacles on ceiling such as sprinklers, vents or recessed lighting. Consider the height of your ceiling and select an appropriate EcoBeam dimension (Width x Height). We can make almost any size and length EcoBeam™.....just ask!
2. Please contact us toll-free at (888) 511-3626, fax (858) 455-1531 or email sales@pcfgroup.com regarding your itemized specific list. When you place your order, please include the following:
 - your sizes (W x H x L)
 - quantities of each
 - style of beam (smooth, standard grain, rustic or rustic with cracks)
 - color finish

EcoBeam™ Example: (6) 8" w x 8" h x 15' 3" Rustic w/ cracks w/ dark walnut finish
 (4) 8" w x 6" h x 12' Rustic w/ cracks w/ dark walnut finish

Corbel Example: (20) Cor-1B 10" w x 14" h x 8" Rustic w/ cracks w/ dark walnut finish

Simple installation instructions are furnished with each order.

ADDITIONAL PRODUCTS AVAILABLE



MOLDING & TRIM



SHUTTERS



PROPS & DISPLAYS